



Urology Instruments with *Filkohayes*

HAYES

Unbeatable Price
Unswerving Quality
Untiring Services



*Dr. Archib Lamadril performed the first mini-robotic 3D Laparoscopy on Dec. 17, 2012.



Flexible Ureteroscope

Excellent Maneuverability

- ① Zoom
- ② Capture/Recording
- ③ Freeze

4-way angulation for accurate positioning.

D275° U275°

R L

R L

CMOS + LED Technology
Fiber-free design makes it more durable.

Insertion tube: 8.5Fr
Working channel: 3.6Fr
Access sheath: 10-12Fr

Portable
Equipped with image processor HV-3101
Support external monitor

Application
Bright and clear image for non-invasive kidney lithotripsy: retrograde intrarenal surgery.

RIRS

Model	Insertion Tube	Channel	Working Length	Bending (Up/Down)	Rotation (Left/Right)	Field of View	Depth of Field
UR-1328	8.5Fr	3.6Fr	670mm	275°/275°	120°/120°	120°	3-50mm



Flexible Cystoscope



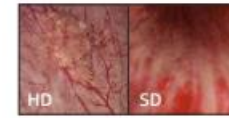
CE 0197

HD Image

Flexible Video Cystonephroscope



CY



HD Image

HD image gives more details of bladder.

Control Button

- ① Zoom
- ② Capture/Recording
- ③ Freeze



CMOS + LED Technology
Fiber-free design makes it more durable.



Insertion tube: 15.6Fr
Working channel: 6.6Fr

Portable

Equipped with image processor HV-3101
Support external monitor



Application

Bladder examination, therapy and kidney calyx observation during PCNL.

Model	Insertion Tube	Channel	Working Length	Bending (Up/Down)	Field of View	Depth of Field
CY-1356	15.6Fr	6.6Fr	380mm	210°/130°	90°	3-50mm

Resectoscope(Mono& Bipolar)



Laser Resectoscope



Percutaneous Neproscope



Lithotripsy



Cysto-Urethroscope Sheath & Bridge

From 17Fr to Fr25



ITEM NO	PRODUCT	COMPATIBLE WITH SHEATH/ FR	WORKING CHANNEL/FR.
系列号	产品	匹配膀胱镜鞘尺寸	器械通道尺寸
MN.TQQ.D	单器械通道 Single Instrument Channel	19.8Fr	5Fr 7Fr
		21Fr	
		22Fr	
		23Fr	
		25Fr	
MN.TQQ.S	双器械通道 带有弯折保护 Double Instrument Channels, with bend protection	19.8Fr	2 x 5 Fr 2 x 7 Fr
		21Fr	
		22Fr	
		23Fr	
		25Fr	



17FR WORKING CHANNEL

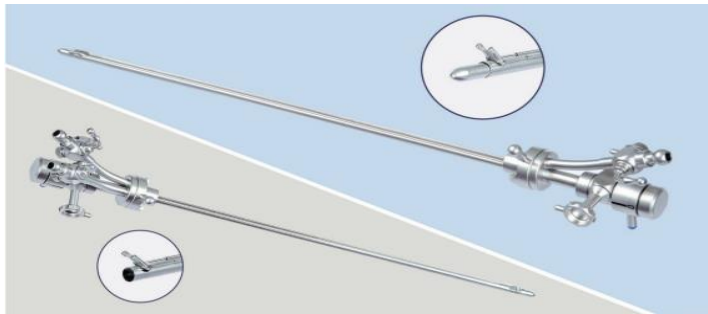
19.8FR WORKING CHANNEL

22.5FR WORKING CHANNEL

INSTRUMENT 手术器械



序列号 ITEM NO	产品 PRODUCT	尺寸 SIZE
	软钳 FLEXIBLE FORCEPS	
MN.5FF36A / MN.7FF36A	活检钳 Biopsy Forceps	5Fr/7Fr*360mm
MN.5FF36B / MN.7FF36B	异物钳 Foreign Body Forceps	5Fr/7Fr*360mm
MN.5FF36C / MN.7FF36C	剪刀 Scissors	5Fr/7Fr*360mm
MN.5FF36D / MN.7FF36D	抓取钳 Grasper Forceps	5Fr/7Fr*360mm



Pediatric sheath

From 9Fr to Fr14



Single & double Bridge

Ureteroscope Semi-Rigid



Model	Working distance (mm)	Field angle (°)	Head diameter (Fr.)	Working length (mm)	Endoscope length (mm)	Maximum size (Fr.)	comparison product	Remarks
U4346A0	6	81	8/9.8	430	565	1x5/2x3	8705.402	Adult split type
U4346A	6	81	8/9.8	430	565	1x5/2x3	8703.534	Adult regular type
U3146A	6	81	8/9.8	315	450	1x5/2x3	8703.533	Adult short type
U4337A	6	81	6/7.5	430	565	1x4/2x2.4	8702.534	Child regular type
U3137A	6	81	6/7.5	315	450	1x4/2x2.4	8702.533	Child short type
U4330A	6	81	4.8/5.5	430	565	1x3	8701.534	Seminal vesicle regular type
U3130A	6	81	4.8/5.5	430	565	1x3	8701.533	Seminal vesicle short type
U3147A	6	81	8.5/11.5	315	450	1x6/2x4	8704.533	Custom-made type
U4340A	6	81	8/9.8	430	565	1x6.5/2x3.3	Finer outer diameter Larger instrument channel	Custom-made type



Neproscope

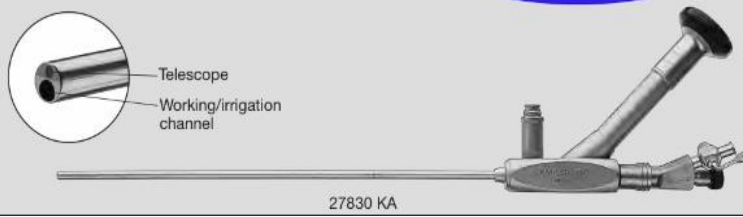
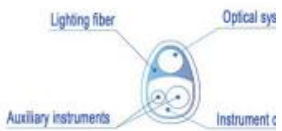
Scope model	Working distance (mm)	Direction angle (°)	Field angle (°)	Diameter (Fr)	Working length (mm)	Instrument channel (Fr)
N2027A	15	8	83	12.0	270	6.3
N3528B	15	8	83	13.5	280	6.3
N2625C	15	8	83	12.6	250	6.3
N3525D	15	8	83	13.5	250	6.3
N9525E	15	8	83	19.5	250	11.1

Sheath model	Working length (mm)	Diameter (Fr)
S2027A	250	13.8
S3528B	260	15.6
S2625C	230	18.0
S3525D	230	15.6
S9525E	230	21.6



- Special Features:**
- Well-proven miniature nephroscope with optimized design
 - One-step dilator with a second eccentric channel for guide wire deflection enables precise steering of the wire
 - Large working channel allows the use of rigid standard instruments and large lithotripsy probes up to 5 Fr.
 - For the treatment of medium stone burdens

- Specifications:**
- Instrument sheath: 12 Fr.
 - Working channel: 6.7 Fr. for use with instruments up to 5 Fr.
 - Telescope: Fiber optic system, direction of view 12°
 - Length: 22 cm
 - Eye-piece: angled



Major handling Urology equipments

Bladder Scanner



Uroflowmeter



Lithotripter



Holmium Laser



Suction irrigation



Morcelator



Laser TURP Resectoscope Set

Laser TURP Working Element –14B09

Laser TURP Procedure is an advance technique to remove prostate by Holmium Laser. Laser TURP procedure is a surgical technique available for the treatment of urinary symptoms due to benign enlargement of the prostate (BPH).

During transurethral resection of the prostate (TURP), an instrument is inserted up the urethra to remove the section of the prostate that is blocking urine flow. TURP SET used in Benign prostatic hyperplasia (BPH).

Laser TURP Procedure also known as Holmium Laser Enucleating of the Prostate (HoLEP), Laser Resectoscopy.

Laser working Element compatible with 600 Micron and 800 Micron.

Advanced Features:

- ✔ More effective compare to Monopolar and Bipolar TURP
- ✔ Recovery very fast & Less hospitalization
- ✔ Suitable for men with prostates of any size
- ✔ Can be used in patient who are taking blood thinners (eg. Aspirin, clopidogrel and warfarin)
- ✔ Designed to provide excellent utility
- ✔ Advanced configuration
- ✔ Autoclavable



Product Code:

Product	Karl Storz	R.Wolf
Laser TURP Working Element	14B09KL	14B09RW



Laser TURP Rotatable Sheath - 14B10

TURP Sheath is an operative sheath through which transurethral electroresection of bladder tumors or prostate gland can be performed. TURP Sheath provides continuous irrigation during TURP Procedures. It also provides 360 Degree movement of Working element which gives good resection of Prostate. Turp sheath length is 19 cm.

Advanced Features:

- ✔ Improve Visualisation
- ✔ Continuous Irrigation
- ✔ Good Locking System
- ✔ Durable and Highly compatible



TURP Sheath Includes:

- ✔ Inner Sheath
- ✔ Outer Sheath
- ✔ Obturator

Product Code:

Product	Size	Karl Storz
TURP Rotatable Sheath – 24 FR	-	14B1024

Bipolar TURP



Bipolar TURP Working Element – 14B08

Bipolar TURP Procedure is an advance technique to remove prostate by Bipolar Resectoscope SET. Distension media is saline solution (NaCl) is mainly used in urology for prostate and bladder resection, by Bipolar Resectoscope SET. The current does not pass through the patient body but is conducted through the cutting electrode, Saline Used as conductor and current pass through Electrode itself.

Advanced Features:

- ✔ Designed to provide excellent utility
- ✔ Use with 4mm 30 Degree Telescope
- ✔ Compatible with Rotatable Sheath
- ✔ Accurate dimensions
- ✔ Non toxic
- ✔ Advanced configuration



Types OF Working Elements

- ✔ Active Working Element
- ✔ Passive Working Element



Product Code:

Product	Karl Storz	R.Wolf	Olympus
Bipolar Active Working Element – Single	14B08AAKL	14B08AARW	-
Bipolar Active Working Element – Double	14B08ABKL	14B08ABRW	-
Bipolar Passive Working Element –Single	14B08ACKL	14B08ACRW	-
Bipolar Passive Working Element – Double	14B08ADKL	14B08ADRW	-



TURP Rotatable Sheath - 14B10

TURP Sheath is an operative sheath through which transurethral electroresection of bladder tumors or prostate gland can be performed. TURP Sheath provides continuous irrigation during TURP Procedures. It also provides 360 Degree movement of Working element which gives good resection of Prostate.

Advanced Features:

- ✔ Improve Visualisation
- ✔ Continuous Irrigation
- ✔ Good Locking System
- ✔ Durable and Highly compatible
- ✔ Length: 19 cm long



TURP Sheath Includes:

- ✔ Inner Sheath
- ✔ Outer Sheath
- ✔ Obturator

Product Code:

Product	Karl Storz	R.Wolf	Olympus
TURP Rotatable Sheath – 26 FR	14B1026	-	-
TURP Rotatable Sheath - 24 FR	14B1024	-	-
TURP Rotatable Sheath - 22 FR	14B1022	-	-



Bipolar TURP Loops

TURP Loops & Electrodes have been developed to improve cutting, coagulation & vaporization.

Advanced Features

- ✔ Cutting & Coagulation
- ✔ Precise design
- ✔ Anti-corrosive
- ✔ Compact design
- ✔ Smooth finish



Compatible With

Karl Storz /Richard Wolf / Olympus

Product Code:

Product	Karl Storz		R.Wolf	Olympus	
	Single Steam	Double Steam	Single Steam	Single Steam – 12°	Single Steam - 30°
Cutting Loop	BSSCL-KS	BDSCL-KS	BSSCL-WC	BSSCL-OC-12	BSSCL-OC-30
Cold Knife	BSSCK-KS	-	BSSCK-WC	BSSCK-OC-12	BSSCK-OC-30
Collins Knife	BSSKK-KS	BDSKK-KS	BSSKK-WC	BSSKK-OC-12	BSSKK-OC-30
Roller Loop 3mm	BSSRE-KS-3	-	BSSRE-WC-3	BSSRE-OC-12-3	BSSRE-OC-30-3
Ball Loop 3mm	BSSBE-KS-3	BDSBE-KS-3	BSSBE-WC-3	BSSBE-OC-12-3	BSSBE-OC-30-3
Button Electrodes	BSSBT-KS	BDSBT-KS	BSSBT-WC	BSSBT-OC-12	BSSBT-OC-30

Length: 29 cm for Karl Storz and R. Wolf Loops / 26 cm for Olympus loops



TURP Cable

TURP Cables is used in TURP Resectoscope surgery. Its 2 types of cable Monopolar Cable & Bipolar Cable. Cable length is 3 m.

Advanced Features:

- ✔ Colour Gray
- ✔ High quality P.V.C. plastic cover
- ✔ Reusable
- ✔ Longer life



Types OF Cable

- ✔ Bipolar L – Shape TURP Cable
- ✔ Bipolar Single Steam TURP Cable



Product Code:

Product	Karl Storz	R.Wolf	Olympus
Bipolar L – Shape TURP Cable	14B12AA	-	-
Bipolar Single Steam TURP Cable	14B12AB	-	-



Resectoscope – 14C01

Filkohayese Provides Resectoscope With international quality standards. Resectoscope is endoscopy of the TURP Surgery. It is connect to the Working Element.

Advanced Features:

- ✔ High-quality stainless steel
- ✔ Excellent image quality
- ✔ Large visual field,
- ✔ superior telescopes
- ✔ Autoclavable



Product Code:

Product	Size:	Code
Resect scope	4 mm x 0 degree	14C01AA
Resect scope	4 mm x 12 degree	14C01AB
Resect scope	4 mm x 30 Degree	14C02AC



Visual Obturator -14B15

Filkohayese handling visual Obturator with international quality standard. TURP Visual Obturator use to check blockage before TURP procedure. Urologist will have better idea for TURP procedure.

Advanced Features:

- ✔ Anti-corrosive
- ✔ Smooth finish
- ✔ Strong construction
- ✔ High performance
- ✔ Durability
- ✔ Precise design
- ✔ Smooth finish
- ✔ Long lasting nature



Product Code:

Product	Karl Storz	R.Wolf	Olympus
Visual Obturator	14B15KL	-	-

Advinn Health Care

Advinn Health Care

Cystoscopy



Cystoscopy Bridge – 14C03

Cystoscopy Bridge are two types of bridge. Single Channel Bridge & Double Channel Bridge. It is also called as Telescope Bridge. Single Channel Cystoscopy Bridge provides extra Instrument channel for Cystoscopic Procedure.

Double Channel Cystoscopy Bridge provides two extra Instrument channel for Cystoscopic Procedure.

Advanced Features:

- ✔ Designed to provide excellent utility
- ✔ Durable and Highly compatible
- ✔ Advanced configuration
- ✔ Autoclavable
- ✔ Compatible with Karl STORZ and Richard Wolf



Types of Bridge:

- ✔ Cystoscopy Single Channel Bridge
- ✔ Cystoscopy Double Channel Bridge

Product Code:

Product	Karl Storz	R.Wolf	Olympus
Cystoscopy Single Channel Bridge	14C03AAKL	14C03AARW	14C03AAOL
Cystoscopy Double Channel Bridge	14C03ABKL	14C03ABRW	-



Cystoscopy Sheath – 14C02

We are leading manufacturer of Cystoscopy Sheaths which design to perform all cystoscopy Procedures. cystoscopy sheath comes with obturator. Cystoscopy sheath also called as Ureterscope Sheath, Cystoscopy Sheath.

Advanced Features:

- ✔ Endoscopic imaging support
- ✔ Good Locking System
- ✔ Tapered ends and assist in penetration
- ✔ Durable, Safe and sterile instruments for each patient
- ✔ Compatible with all cystoscopies
- ✔ Allows greater flexibility
- ✔ With 2 fixed stopcocks
- ✔ Allows greater flexibility



Product Code:

Product	Size:	Karl Storz	R.Wolf	Olympus
Cystoscopy Sheath	15.5 Fr	14C02155KL	-	-
Cystoscopy Sheath	17 Fr	14C02170KL	-	-
Cystoscopy Sheath	19 Fr	14C02190KL	14C02190RW	-
Cystoscopy Sheath	20 Fr	14C02200KL	14C02200RW	-
Cystoscopy Sheath	22 Fr	14C02220KL	14C02220RW	-
Cystoscopy Sheath	23.5 Fr	14C02235KL	14C02235RW	-
Cystoscopy Sheath	25 Fr	14C02250KL	14C02250RW	14C02250OL



Cystoscope –14C01

Cystoscopy is endoscopy of the urinary bladder via the urethra. It is carried o cystoscope. The urethra is the tube that carries urine from the bladder to the outs body. The cystoscope has lenses like a telescope or microscope.

Advanced Features:

- ✔ High-quality stainless steel
- ✔ High-flow characteristics
- ✔ Milled Radel shaft
- ✔ large working channels
- ✔ 360-degree shaft rotation
- ✔ Excellent image quality
- ✔ Ultra-wide fields of view
- ✔ Autoclavable

Product Code:

Product	Size:	Code
Cystoscope	4 mm x 0 degree	14C01AA
Cystoscope	4 mm x 12 degree	14C01AE
Cystoscope	4 mm x 30 Degree	14C01AC
Cystoscope	2.9 mm x 0 Degree	14C01AD
Cystoscope	2.9 mm x 30 Degree	14C01AE



Cystoscopy Stent Removing Forceps - 14C04

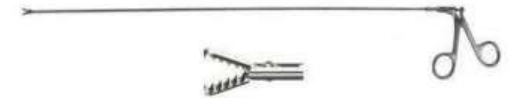
Stent Removing Forceps is designed for the easy removal of stents.

Stent Removing Forceps is also called as Flexible Stent Removing Forceps, Double J Stent removal Forceps, Ureteral.

Stent Removal Forceps and flexible cystoscopic stent removal.

Advanced Features:

- ✔ Reusable stent removal forceps
- ✔ Strong grasping
- ✔ Autoclavable
- ✔ Alligator jaw for strong grip



Product Code:

Product	Size	Code
Cystoscopy Stent Removing Forceps	4 Fr x 450 mm	14C0404
Cystoscopy Stent Removing Forceps	5 Fr x 450 mm	14C0405
Cystoscopy Stent Removing Forceps	7 Fr x 450 mm	14C0407



Cystoscopy Biopsy Forceps - 14C05

Flexible biopsy forceps with movable cup-shaped jaws, used to obtain biopsy specimens by introduction through a specially designed endoscope.

Flexible Biopsy Forceps are made of high quality stainless steel to provide physicians with a product of high longevity and a smooth cup operation in any situation.

Flexible Biopsy Forceps is also called as Flexible Cystoscopy Biopsy Forceps, Reusable Flexible Biopsy forceps and Flexible Cup Biopsy Forcep.

Advanced Features:

- ☑ Superior cutting performance
- ☑ Less bleeding
- ☑ Reusable Flexible Biopsy forceps
- ☑ Autoclavable



Product Code:

Product	Size	Code
Cystoscopy Biopsy Forceps	4 Fr x 450 mm	14C0504
Cystoscopy Biopsy Forceps	5 Fr x 450 mm	14C0505
Cystoscopy Biopsy Forceps	7 Fr x 450 mm	14C0507



URS Alligator Forceps- 14D01

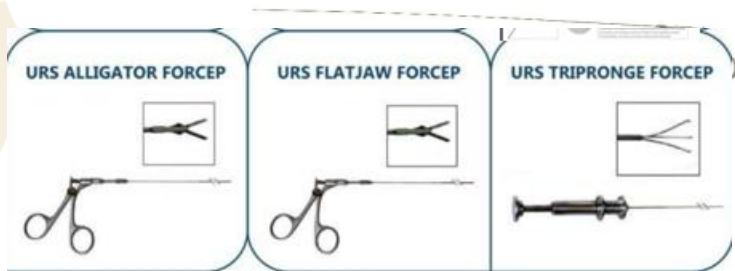
URS Alligator/URS FlatJaw/URS Tripronge forceps

URS Alligator Forcep used for the retrieval of fragmented stones from ureteral and renal pelvis after performing Lithoclast procedure.

URS Alligator Forcep is also called as URS Grasping Forcep, Urology Forceps, Stent Removing Forceps, Stone Grasping Forcep for Ureteroscope.

Advanced Features:

- ☑ Durable
- ☑ Easy to use
- ☑ Anti-corrosive
- ☑ Smooth finish
- ☑ High performance



Product Code:

Product	Size	Code
URS Alligator Forceps	3 Fr - 610 mm	14D010361
URS Alligator Forceps	4 Fr - 610 mm	14D010461
URS Alligator Forceps	5 Fr - 610 mm	14D010561
URS Alligator Forceps	3 Fr - 450 mm	14D010345
URS Alligator Forceps	4 Fr - 450 mm	14D010445
URS Alligator Forceps	5 Fr - 450 mm	14D010545

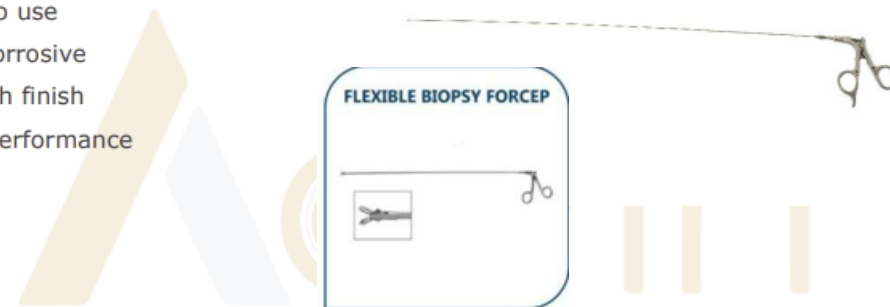
URS Biopsy Forceps

URS Biopsy Forcep used for the retrieval of fragmented stones from ureteral and renal pelvis after performing Lithoclast procedure.

URS Biopsy Forcep is also called as URS Grasping Forcep, Urology Forceps, Stent Removing Forceps, Stone Grasping Forcep for Ureteroscope.

Advanced Features:

- ☑ Durable
- ☑ Easy to use
- ☑ Anti-corrosive
- ☑ Smooth finish
- ☑ High performance



Product Code:

Product	Size	Code
URS Biopsy Forceps	3 Fr - 610 mm	14D070361
URS Biopsy Forceps	4 Fr - 610 mm	14D070461
URS Biopsy Forceps	5 Fr - 610 mm	14D070561
URS Biopsy Forceps	3 Fr - 450 mm	14D070345
URS Biopsy Forceps	4 Fr - 450 mm	14D070445
URS Biopsy Forceps	5 Fr - 450 mm	14D070545

URS Tripronge Forceps- 14D02

URS Tripronge Forcep used for the retrieval of fragmented stones from ureteral and renal pelvis after performing Lithoclast procedure.

URS Tripronge having 3 Jaw which gives more grip over the stone.

Advanced Features:

- ✔ Durable
- ✔ Easy to use
- ✔ Anti-corrosive
- ✔ Smooth finish
- ✔ High performance



Product Code:

Product	Size	Code
URS Tripronge Forceps	3 Fr - 610 mm	14D020361
URS Tripronge Forceps	4 Fr- 610 mm	14D020461
URS Tripronge Forceps	5 Fr- 610 mm	14D020561
URS Tripronge Forceps	3 Fr - 450 mm	14D020345
URS Tripronge Forceps	4 Fr- 450 mm	14D020445
URS Tripronge Forceps	5 Fr- 450 mm	14D020545



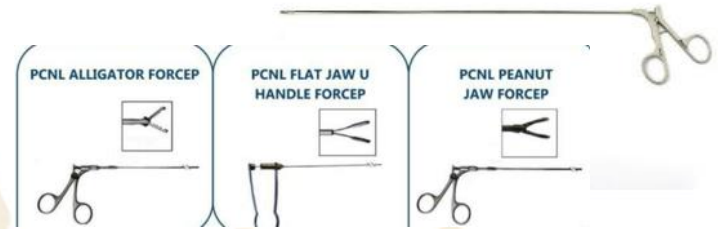
PCNL Alligator Forceps – 14E06

PCNL Alligator/Flat Jaw/Peanut Jaw

PCNL Alligator Forcep used the retrieval of Fragmented stones from kidney after performing lithoclast procedure.

Advanced Features:

- ✔ Reusable & Autoclavable
- ✔ Durable & Easy to use
- ✔ Strong Grasping
- ✔ High performance
- ✔ Anti-corrosive
- ✔ Smooth finish



Product Code:

Product	Size	Code
PCNL Alligator Forceps	5 Fr x 360 mm	14E0605
PCNL Alligator Forceps	6 Fr x 360 mm	14E0606
PCNL Alligator Forceps	7 Fr x 360 mm	14E0607
PCNL Alligator Forceps	9 Fr x 360 mm	14E0609
PCNL Alligator Forceps	12 Fr x 360 mm	14E0612

PCNL Basket –14E11

PCNL Basket are used for kidney stone removal.(PCN cases) The design is to provide atraumatic stone extraction in PCNL cases. Available with flexible Tip, Rigid Tip, & E circle Tip.

Advanced Features:

- ✔ Nitinol wire Tipless basket
- ✔ The handle is fully detachable and refixable.
- ✔ Ergonomic Handle
- ✔ Autoclavable



Product Code:

Size	37 cm	40 cm	42 cm
7 Fr	14E110737	14E110740	14E110742
8 Fr	14E110837	14E110840	14E110842
9 Fr	14E110937	14E110940	14E110942
12 Fr	14E111237	14E111240	14E111242



Spider Basket –14K05

Spider Basket provides a unique net type geometry to capture and extract intact stones and prevent migration.

Advanced Features:

- ✔ Adjustable knob allows for controlled and assured basket expansion
- ✔ The handle is fully detachable and refixable.
- ✔ Ergonomic Handle
- ✔ Sterile ETO & single use



Product Code:

Size	70 cm	90 cm	120 cm
1.9 Fr	14K051970	14K051990	14K0519120
2.2 Fr	14K052270	14K052290	14K0522120
2.5 Fr	14K052570	14K052590	14K0525120
3 Fr	14K053070	14K053090	14K0530120

Nitinol Stone Retrieval Basket –14K01

Nitinol Stone Retrieval Basket is intended to be used in an endoscopic procedure for removal of urinary stones or foreign objects from the ureter or the kidney.

Advanced Features:

- ✔ Adjustable knob allows for controlled and assured basket expansion
- ✔ The handle is fully detachable and refixable
- ✔ Ergonomic Handle
- ✔ Sterile & single use



Available in:

- ✔ Tip / Tipless
- ✔ Segura/Helical
- ✔ 4 & 5 Wire

Product Code:

Size	Segura			Helical		
	70 CM	90 CM	110 CM	70 CM	90 cm	110 CM
1.4 Fr	14K011470S	14K011490S	14K0114110S	14K011470H	14K011490H	14K0114110H
1.7 Fr	14K011770S	14K011790S	14K0117110S	14K011770H	14K011790H	14K0117110H
1.9 Fr	14K011970S	14K011990S	14K0119110S	14K011970H	14K011990H	14K0119110H
2.2 Fr	14K012270S	14K012290S	14K0122110S	14K012270H	14K012290H	14K0122110H
2.4 Fr	14K012470S	14K012490S	14K0124110S	14K012470H	14K012490H	14K0124110H
3 Fr	14K013070S	14K013090S	14K0130110S	14K013070H	14K013090H	14K0130110H
4 Fr	14K014070S	14K014090S	14K0140110S	14K014070H	14K014090H	14K0140110H
5 Fr	14K015070S	14K015090S	14K0150110S	14K015070H	14K015090H	14K0150110H
6 Fr	14K016070S	14K016090S	14K0160110S	14K016070H	14K016090H	14K0160110H



Ureteral Balloon Dilator – 14J02

Ureteral Balloon Dilator used for ureteral dilation prior to ureteral stone manipulation or ureteroscopy and dilating the intermural ureter.

Advanced Features:

- ✔ Made in High grade medical material
- ✔ Radiopaque markers indicate
- ✔ Proximal & distal ends of balloon for fluroscopy placement
- ✔ Sterile & single Use
- ✔ Short tapered distal tip allows close approach to ureteral stone



Product Code:

Product	Size	Code
Ureteral Balloon Dilator	3 Fr X 70 cm	14J0203
Ureteral Balloon Dilator	4 Fr x 70 cm	14J0204
Ureteral Balloon Dilator	5 Fr x 70 cm	14J0205
Ureteral Balloon Dilator	6 Fr x 70 cm	14J0206

Double J Stent –14H01

A ureteral stent or ureteric stent, is a thin tube inserted into the ureter to prevent or treat obstruction of the urine flow from the kidney.

The stent is usually inserted with the aid of a cystoscope. One or both ends of the stent may be coiled to prevent it from moving out of place; this is called a JJ stent, double J stent or pig-tail stent.

Advanced Features:

- ☑ Radiopaque for better visualization
- ☑ Pigtail Loop Avoids slippage
- ☑ Smooth Surface
- ☑ Long life indwelling stents
- ☑ low encrustation tendency
- ☑ Highly Radiopacity

Available in:

- ☑ Multi loop/single loop
- ☑ Both end Open
- ☑ One end closed
- ☑ Colour: Blue, Yellow, White
- ☑ Hydrophilic coating
- ☑ Stent with String

SET Contains:

Stent with/without string, Guide wire, Pusher, Clamp & Patient Slip



Product Code:

Size	Double J Stent	Double J Stent Set
3 Fr	14H0130-(len)-(S/M)- (OE/CE)	14H0230-(len)-(S/M)- (OE/CE)
4 Fr	14H0140-(len)-(S/M)- (OE/CE)	14H0240-(len)-(S/M)- (OE/CE)
4.5 Fr	14H0145-(len)-(S/M)- (OE/CE)	14H0245-(len)-(S/M)- (OE/CE)
4.7 Fr	14H0147-(len)-(S/M)- (OE/CE)	14H0247-(len)-(S/M)- (OE/CE)
4.8 Fr	14H0148-(len)-(S/M)- (OE/CE)	14H0248-(len)-(S/M)- (OE/CE)
5 Fr	14H0150-(len)-(S/M)- (OE/CE)	14H0250-(len)-(S/M)- (OE/CE)
5.5 Fr	14H0155-(len)-(S/M)- (OE/CE)	14H0255-(len)-(S/M)- (OE/CE)
6 Fr	14H0160-(len)-(S/M)- (OE/CE)	14H0260-(len)-(S/M)- (OE/CE)
7 Fr	14H0170-(len)-(S/M)- (OE/CE)	14H0270-(len)-(S/M)- (OE/CE)
8 FR	14H0180-(len)-(S/M)- (OE/CE)	14H0280-(len)-(S/M)- (OE/CE)

- Length: 8 – 32 Cm
- S for Single Loop, M for Multi loop,
- OE = Both Open End, CE = Both Close End
- Colour: Add suffix- Blue = 'B', White = 'W', Yellow = 'Y'
- For SUTURE Add Suffix = 'S'

For Example: DJ stent 6 Fr x 26 cm: - "14H01-60-26-S-OE-B"



PCN(Percutaneous nephrostomy) Catheter – 14H05

PCN (percutaneous nephrostomy) Catheter Used temporary drainage & irrigation of urine from kidney by direct puncture in presence of distal obstruction. PCN Drainage Catheter with luer lock.

Advanced Features:

- ☑ Radiopaque for better visualization
- ☑ Pigtail tip configuration helps in the retention of the distal tip in the renal pelvis
- ☑ Smooth Surface
- ☑ Locking types has more retention and can be kept for longer duration
- ☑ Flexible material
- ☑ Highly Radiopacity



Available in:

- ☑ With / without Needle
- ☑ With / without Urine Bag
- ☑ With locking mechanism & needle

Product Code:

Size	PCN Catheter Without Needle	PCN Catheter With Needle
6 Fr	14H0560-(len)	14H0560-(len)-N
8 Fr	14H0580-(len)	14H0580-(len)-N
8.5 Fr	14H0585-(len)	14H0590-(len)-N
10 Fr	14H05100-(len)	14H05100-(len)-N
12 Fr	14H05120-(len)	14H05120-(len)-N
14 Fr	14H05140-(len)	14H05140-(len)-N
16 Fr	14H05160-(len)	14H05160-(len)-N
18 Fr	14H05180-(len)	14H05180-(len)-N

- Length: 22 & 30 Cm
- For Example: PCN Catheter with Needle 6 Fr x 30 cm: 14H05-60-30-N





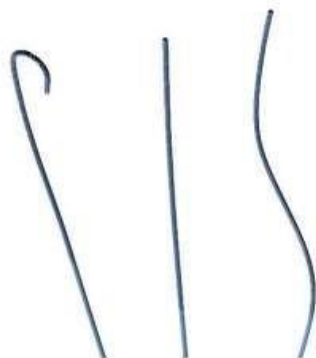
Amplatz Guide Wire – 14L04

Amplatz Guide Wire is used to diverse range of procedure and anatomical coditions & placement of medical devices during diagnostic or interventional procedure.

Amplatz Guide Wire Also Known As Super stiff Guide Wire, Lunderquist Guide Wire.

Advanced Features:

- Guide wire tip to be delivered to the desired position in a vessel
- Allows moving the distal tip to search for the true lumen
- Permits shape memory retention of the distal tip throughout
- Transmit rotational forces from the operators hand to the tip
- Advance balloon catheters/other devices on Guidewire



Product Code:

Size	ST Tip	J Tip
0.032" X 150 cm	14L0432ST	14L0432JT
0.035" x 150 cm	14L0435ST	14L0435JT

Health Care

Endopyelotomy Stent – 14H07

Endopyelotomy Stent is used for temporary internal drainage from the ureteropelvic junction to the bladder following incision of a stricture.

Advanced Features:

- High radiopaque for better visualization
- Large diameter at incised utero-pelvic junction provides optimal healing & drainage
- Pigtail for better retention
- Prevent growth of ureteral wall to the stent
- Segment with no sideports prevents post-operative narrowing of the ureteral lumen
- Mainly used for patient having malignancy



Product Code:

Product	Size	Code
Endopyelotomy Stent	5FR/10 FR X 26 cm	14H07AA
Endopyelotomy Stent	6FR/12 FR X 26 cm	14H07AB
Endopyelotomy Stent	7FR/14 FR X 26 cm	14H07AC



Urodynamic Catheter – 14I03

Urodynamic Catheter measuring eye is in each case located on the catheter shaft 70 mm from tip. Color –tinted ch4.5 pressure lines correspond closely with catheter lumen, with a translucent tinted and winged female luer fitted to each line.

Advanced Features:

- ☑ Sterile, Single Use
- ☑ High Grade medical Material
- ☑ Better utilisation of human resources



Product Code:

Product	Size	Code
Urodynamic Catheter	6 Fr x 60 cm	14I0306
Urodynamic Catheter	8 Fr x 60 cm	14I0308

Foley's Balloon Catheter – 14I05

Foley catheter is a flexible tube that a clinician passes through the urethra and into the bladder to drain urine. It is the most common type of indwelling urinary catheter.

The tube has two separated channels, or lumens, running down its length. One lumen, open at both ends, drains urine into a collection bag. The other has a valve on the outside end and connects to a balloon at the inside tip.

Advanced Features:

- ☑ Symmetrical large capacity balloon ensuring a straight tip for proper flow and good sphincter action thus preventing bladder leakage
- ☑ Used for short/long term urine drainage
- ☑ Manufactured from natural rubber coated with silicone to eliminate the risk of encrustation
- ☑ Coned distal end provided with burr free eyes for atraumatic intubation
- ☑ Hard valve ensures easy inflation and deflation of balloon
- ☑ Color coded for instant size identification
- ☑ Sterile, individually packed in peelable pack



Types of Foley Balloon Catheter

- ☑ Latex / Silicone
- ☑ 2 Way/ 3 Way

Foley Balloon Catheter – 14I05

Foley catheter is a flexible tube that a clinician passes through the urethra and into the bladder to drain urine. It is the most common type of indwelling urinary catheter.

The tube has two separated channels, or lumens, running down its length. One lumen, open at both ends, drains urine into a collection bag. The other has a valve on the outside end and connects to a balloon at the inside tip.

Advanced Features:

- ✔ Symmetrical large capacity balloon ensuring a straight tip for proper flow and good sphincter action thus preventing bladder leakage
- ✔ Used for short/long term urine drainage
- ✔ Manufactured from natural rubber coated with silicone to eliminate the risk of encrustation
- ✔ Coned distal end provided with burr free eyes for atraumatic intubation
- ✔ Hard valve ensures easy inflation and deflation of balloon
- ✔ Color coded for instant size identification
- ✔ Sterile, individually packed in peelable pack



Types OF Foley Balloon Catheter

- ✔ Latex / Silicone
- ✔ 2 Way/ 3 Way

Ureteral Balloon Dilator – 14J02

Ureteral Balloon Dilator used for ureteral dilation prior to ureteral stone manipulation or ureteroscopy and dilating the intermural ureter.

Advanced Features:

- ✔ Made in High grade medical material
- ✔ Radiopaque markers indicate
- ✔ Proximal & distal ends of balloon for fluroscopy placement
- ✔ Sterile & single Use
- ✔ Short tapered distal tip allows close approach to ureteral stone



Product Code:

Product	Size	Code
Ureteral Balloon Dilator	3 Fr X 70 cm	14J0203
Ureteral Balloon Dilator	4 Fr x 70 cm	14J0204
Ureteral Balloon Dilator	5 Fr x 70 cm	14J0205
Ureteral Balloon Dilator	6 Fr x 70 cm	14J0206

Path Finder – 14D10



The Pathfinder bulb irrigator is the discerning Basic irrigation device that provides the physician the option of controlling the flow of irrigation. It is also known as track finder.

Advanced Features:

- ✔ Better Visualization
- ✔ Continuous flow & pulsatile with minimal tubing
- ✔ Highly accurate delivery
- ✔ Bolus irrigation
- ✔ Easily moved scope with bulb attached



Product Code:

Product	Size	Code
Path Finder		14D10

Testicular Prosthesis – 14N02

Testicular Prosthesis is used for cosmetic treatment of monorchism and anorchism. Implantation of solid testicular can correct the deficiency cosmetically.

Advanced Features:

- ✔ safe and effective
- ✔ feels real
- ✔ natural design



Product Code:

Product	Size	Code
Testicular Prosthesis	25 x 19 mm	14N0201
Testicular Prosthesis	30 x 21 mm	14N0202
Testicular Prosthesis	35 x 25 mm	14N0203